

# SCM-Series, Speed Control Muffler

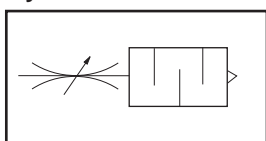
SCM-Series muffler with speed control provides infinite variation of control of air flow at an acceptable sound level on the exhaust ports of air valves with complete safety.



An external adjustment screw accurately varies orifice opening from closed to full flow as required. The final position is then locked in place by the lock nut. Objectionable exhaust air noise is eliminated by the surrounding sleeve of sintered bronze.

SCM-Series mufflers feature complete safety in operation. The sintered bronze sleeve is held securely in position and protected by an integral shroud. Standard pipe thread connections provide easy attachment to equipment. Unit should be mounted in a protective position, free from excessive vibration.

### Symbol



Use wrench on hex head to tighten unit to the device. Unit contains a 40 micron element.

### HOW TO ORDER

**SCM** —

**Speed Control Muffler**    **Connection (NPTM)**    **Port Option**

                                         08 = 10-32UNF    None = NPT

                                         18 = 1/8", 28 = 1/4"    P = BSPT

                                         38 = 3/8", 48 = 1/2"    G = BSPP

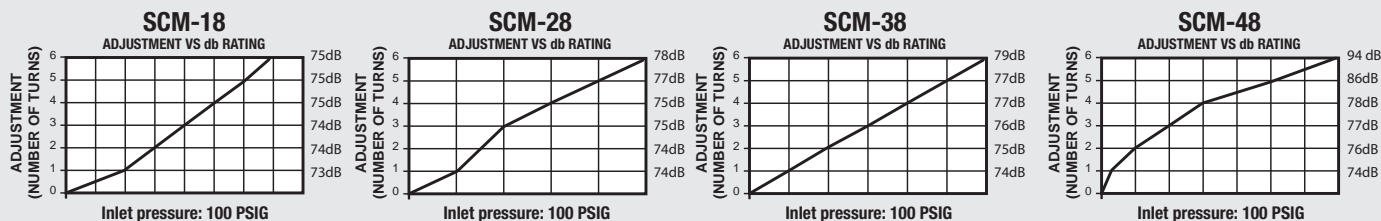
                                         68 = 3/4", 88 = 1"

### SPECIFICATIONS

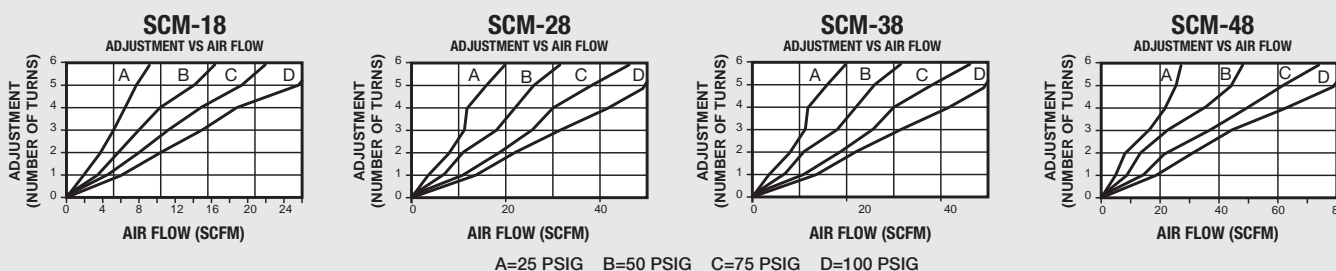
ITEM	MODEL	SCM-08	SCM-18	SCM-28	SCM-38	SCM-48	SCM-68	SCM-88
CONNECTION	NPTM	10-32UNF	1/8"	1/4"	3/8"	1/2"	3/4"	1"
MAX. ADJUSTMENT FLOW	SCFM	10	30	50	70	100	130	160
APPROX. HEIGHT (FULL OPEN)	IN.	23/32"	1-1/2"	1-11/16"	1-11/16"	2"	2-3/4"	3"
HEX	IN.	5/16"	1/2"	9/16"	11/16"	7/8"	1-7/64"	1-11/32"
MATERIAL	BODY	BRASS						
	ELEMENT	SINTERED BRONZE (40 micron)						
MAX OPERATING PRESSURE		150 PSI	300 PSI (21.1 kg/cm <sup>2</sup> )					
OPERATING TEMPERATURE		35° ~ 300°F (1.6° ~ 149°C)						
WEIGHT (APPROX.)	OZ.	0.18	0.65	1.12	1.73	2.95	4.72	7.57
UNIT PACK	EA.	10	10	10	10	5	1	1

### SOUND CHARACTERISTICS VS. ADJUSTMENT - SPEED CONTROL MUFFLER

INLET PRESSURE=100 PSIG



### FLOW CHARACTERISTICS VS. ADJUSTMENT-SPEED CONTROL MUFFLERS



\* All tests are performed by Consolidated Laboratories, Inc.

©2014 Adsens Tech. All Rights Reserved.