



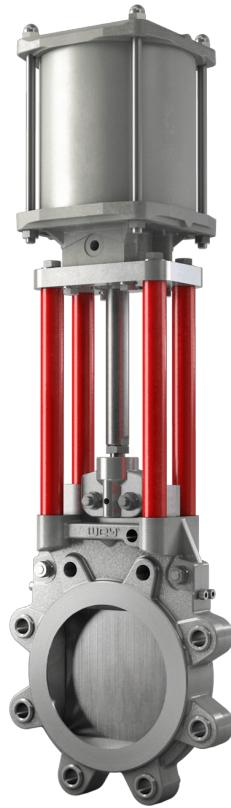
KNIFE GATE VALVES

VL SERIES



VL SERIES

With the optimized lug design of our VL Series, we give you the best of both worlds. It unites cost-saving design and the highest possible performance. Made of stainless steel as standard, it is often used in corrosive applications and, thanks to its 100% bidirectional bubble-tight shut off, offers the best possible customer confidence and satisfaction.



CHARACTERISTICS VL SERIES

50 – 900 mm

Nominal sizes

Stainless steel, Special material

Material

0 – 10 bar

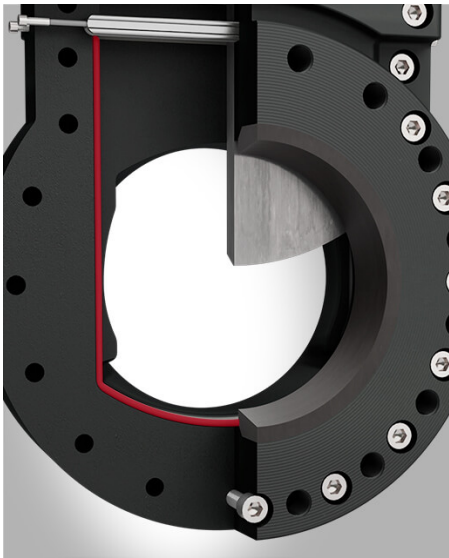
Pressure rating

ANSI Class 150

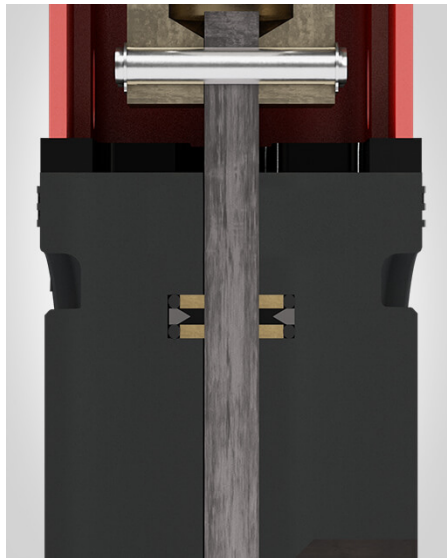
Flange drilling

MSS-SP81

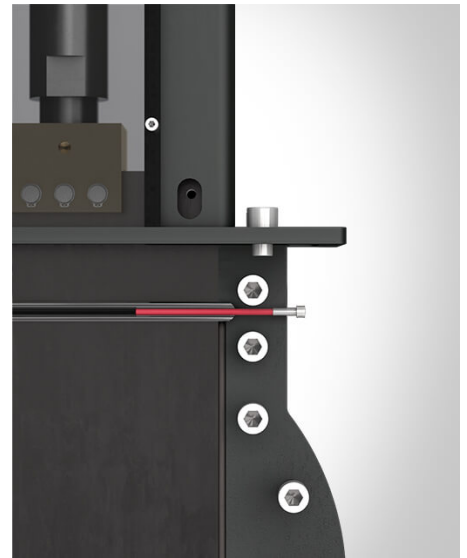
Face to face dimension



A mechanically retained round cord seal creates a bubble-tight shut off on the gate edge.



A unique transverse seal, consisting of a transverse seal profile and packing compound, makes the body bubble-tight towards the atmosphere.



The transverse seal can be repacked at any time and under full pressure using the lateral packing screws.



Optimized chest design to minimize the build-up of solids due to gate geometry.

APPLICATION AREAS

Chemical and petrochemical industries

e.g. Viscous pastes, Granulates, Chemically contaminated waste water ...

Food and beverage

e.g. Syrups, juices and beverages, Cereal, vegetable, mash, etc., Processed fruits, Cheese powder, Cocoa beans ...

Pulp and paper industry

e.g. Pulp Stock (Low to high density), Liquor (black, white, green), Chemical solutions, bleaching agents ...

Water treatment

e.g. Seawater, Saltwater ...

MATERIAL OF CONSTRUCTION

Part	Stainless steel
Body	316 Stainless steel
Gate	316 Stainless steel
Seal	Aflas
Topwork	Carbon steel
Stem / Piston rod	430F

Other materials upon request

CORROSION PROTECTION

Topwork	Two-layer wet coating
Screws	Stainless steel

ACTUATORS



Handwheel



Bevel gear



Pneumatic cylinder



Hydraulic cylinder



Electric actuator

DOWNLOADS

General documents


Product brochure knife gate valves	PDF	↓
Instruction manual	PDF	↓
Seal arrangement	PDF	↓
Lubricants	PDF	↓
Declaration of conformity DGRL	PDF	↓
Declaration of incorporation ECMD	PDF	↓


Data sheets

VL with handwheel	PDF	↓
VL with bevel gear	PDF	↓
VL with pneumatic cylinder	PDF	↓

**CONTACT US FOR YOUR TAILOR-
MADE SOLUTION.**

 [Contact](#)

 +41 41 449 99 44

 rfq@weyvalve.ch